



Apt 15 West Park Apartments

La Route De St. Aubin
St. Helier
Jersey
JE2 3PZ

£1,050,000

FC112

SHARE TRANSFER - Elevated within the award-winning West Park development, this exceptional 3-bedroom, 3-bathroom 3rd floor apartment enjoys panoramic views across St Aubin's Bay and Elizabeth Castle.

The spacious layout includes a striking open-plan kitchen with Miele appliances, a bright living/dining area with feature bay windows, and direct access to a south-facing balcony, ideal for entertaining. The master suite offers a walk-in dressing room and luxury en-suite, complemented by two further double bedrooms, each with their own bathrooms. A laundry room, cloakroom, and generous storage complete this superb home.

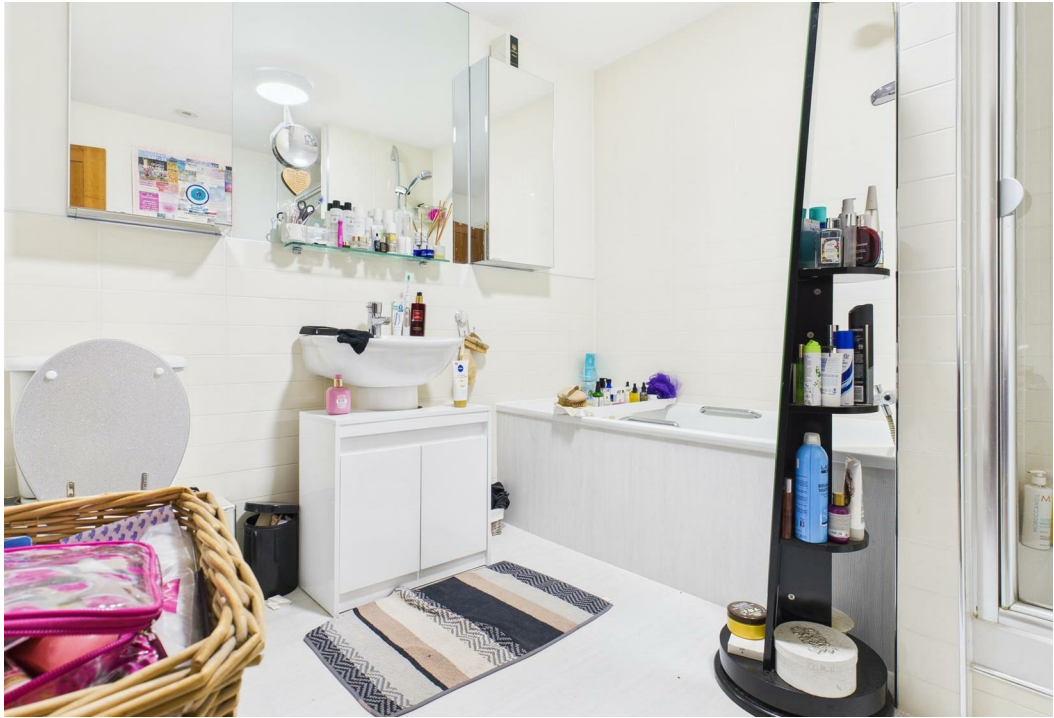
The property flows well with bright hallways and contemporary living spaces, including a vibrant second lounge area. The bedrooms, while modest in size, are thoughtfully designed with fitted storage and clever layouts to maximise space. The principal bedroom benefits from a dressing area and an en-suite, while the additional bedrooms are ideal for guests, a home office, or hobbies.

Bathrooms are finished to a high standard, offering both bath and shower options. A private balcony provides the perfect spot to enjoy morning coffee or evening sunsets, overlooking the water.

Further features include a utility area, ample storage solutions, and modern finishes throughout. This apartment is ideal for those looking to enjoy a high-quality coastal lifestyle in a prime location and has 2 parking spaces.











Approximate total area⁽¹⁾

1680 ft²

156.2 m²

(1) Excluding balconies and terraces

Calculations reference the RICS IPMS 3C standard. Measurements are approximate and not to scale. This floor plan is intended for illustration only.

GIRAFFE360

Outside

South-facing balcony providing far reaching sea-views

Services

All mains services - electric heating

Directions

West Park Apartments sits beside People's Park and the West Park slipway, directly opposite St Aubin's Bay.

Call us on

01534 888855

jersey@fineandcountry.com

www.fineandcountry.je

5 King Street, St Helier, Jersey, JE2 4WF

MONEY LAUNDERING REGULATION - Once an offer is accepted and negotiations for the purchase of a property are entered into, the prospective purchasers will be asked to produce photographic identification and proof of residency documentation, e.g. current utility bill and ID. This is in order for us to comply with the current Money Laundering Legislation.

Fine & Country Jersey advises prospective purchasers that we have prepared these sales particulars as a general guide only. We have not carried out a detailed survey, nor tested the services, appliances and specified fittings. Room sizes are approximate and rounded; they are taken between internal wall surfaces and therefore include cupboards/shelves etc, accordingly they should not be relied upon when purchasing fittings. Carpet, curtains/blinds and kitchen equipment, whether fitted or not, are deemed to be removable by the vendor unless specifically itemised within these particulars and/or within the property inventory. These particulars are supplied on the understanding that all negotiations are conducted through Fine & Country Jersey, their accuracy is not guaranteed nor do they form part of any contract.